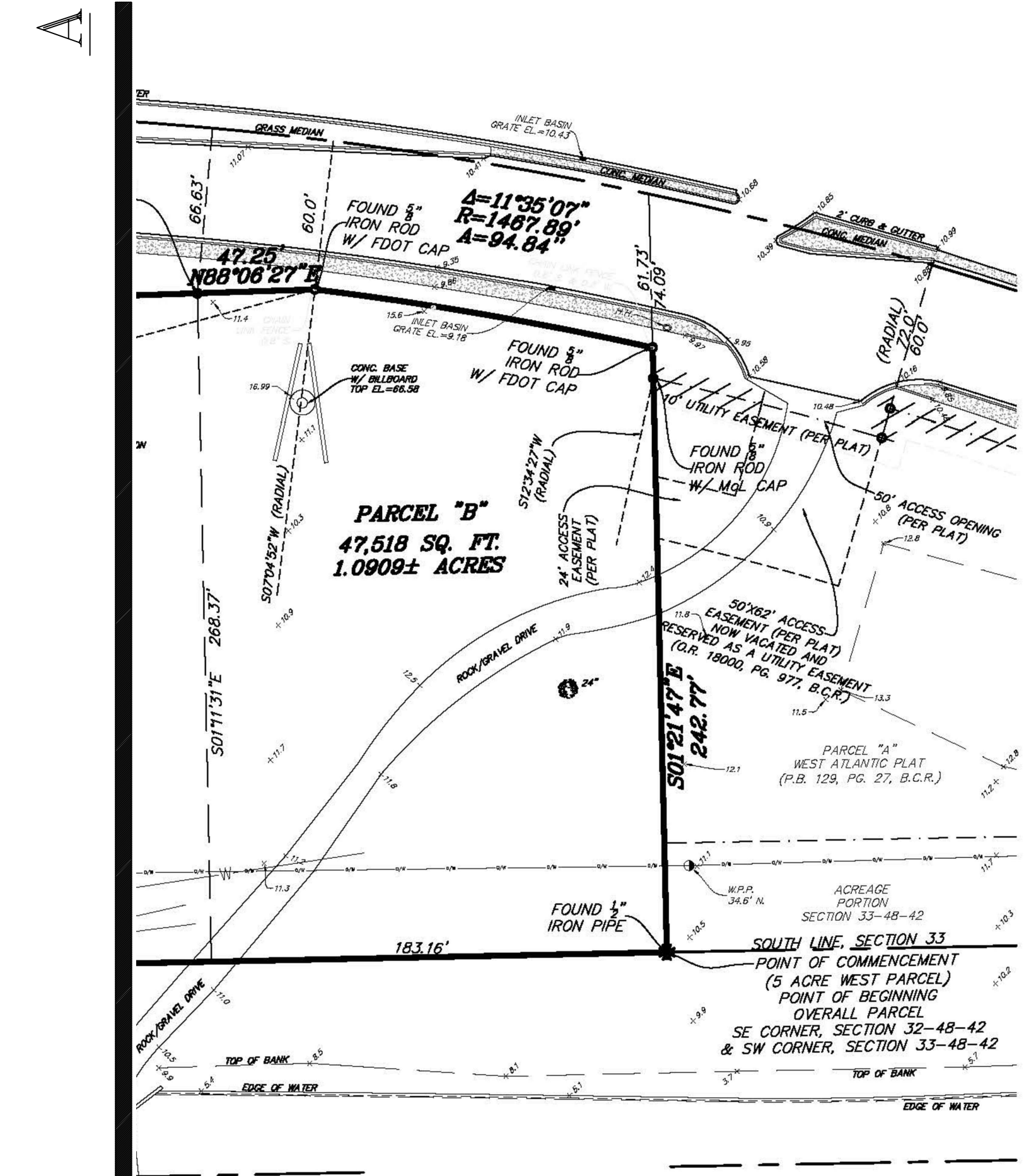
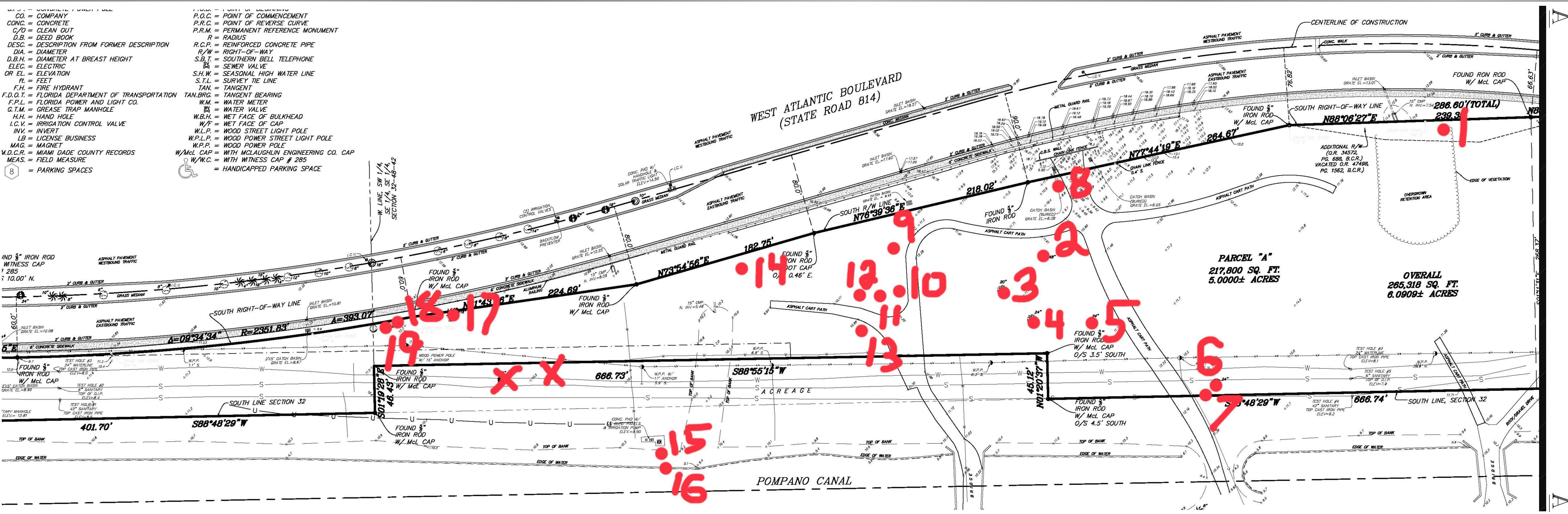


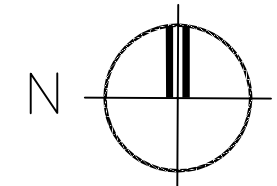
CO. = COMPANY
CONC. = CONCRETE
C/O = CLEAN OUT
D.B. = DEED BOOK
DESC. = DESCRIPTION FROM FORMER DESCRIPTION
DIA. = DIAMETER
D.B.H. = DIAMETER AT BREAST HEIGHT
ELEC. = ELECTRIC
OR EL. = ELEVATION
FT. = FEET
F.H. = FIRE HYDRANT
F.D.O.T. = FLORIDA DEPARTMENT OF TRANSPORTATION
F.P.L. = FLORIDA POWER AND LIGHT CO.
G.T.M. = GREASE TRAP MANHOLE
H.H. = HAND HOLE
I.C.V. = IRRIGATION CONTROL VALVE
INV. = INVERT
L.B. = LICENSE BUSINESS
MAG. = MAGNET
M.D.C.R. = MIAMI DADE COUNTY RECORDS
MEAS. = FIELD MEASURE
P. = PARKING SPACES

P.O.C. = POINT OF COMMENCEMENT
P.R.C. = POINT OF REVERSE CURVE
P.R.M. = PERMANENT REFERENCE MONUMENT
R. = RADIUS
R.C.P. = REINFORCED CONCRETE PIPE
R/W = RIGHT-OF-WAY
S.B.T. = SOUTHERN BELL TELEPHONE
S.V. = SEWER VALVE
S.H.W. = SEASONAL HIGH WATER LINE
S.T.L. = SURVEY TIE LINE
TAN. = TANGENT
TAN.BRG. = TANGENT BEARING
W.M. = WATER METER
W.B.H. = WET FACE OF BULKHEAD
W/F = WET FACE OF CAP
W.L.P. = WOOD STREET LIGHT POLE
W.P.L.P. = WOOD POWER STREET LIGHT POLE
W.P.P. = WOOD POWER POLE
W/MCL CAP = WITH MCLAUGHLIN ENGINEERING CO. CAP
W/W.C. = WITH WITNESS CAP # 285
H = HANDICAPPED PARKING SPACE



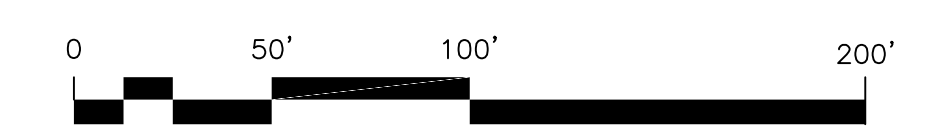
TREE DISPOSITION PLAN

Tree #	Common name	Botanical name	DBH	Height	Conditi on	Price per in / ft	Sq. inches	Value before Diminutio n	Value	Notes	DISPOSITION
1	Sabal palm	Sabal palmetto		17	70%	\$179.17	NA	3,045.89	\$2,132.12	Trunk heavy with vine	Remain
2	Java plum	Syzygium cumini	45		50%	\$0.00	NA	0.00	\$0.00	Invasive species	REMOVE
3	Black olive	Bucida buceras	22.5		40%	\$179.17	NA	4,031.33	\$0.40	Co-dom with inclusion, decay in first and second order branches, sparse foliage	REMOVE
4	Black olive	Bucida buceras	21		50%	\$179.17	NA	3,762.57	\$1,881.29	Decay in first order, previous storm damage, poor structure	REMOVE
5	Black olive	Bucida buceras	17.5		30%	\$179.17	NA	3,135.48	\$940.64	Decay in trunk, decay in first and second order branches, very poor structure, poor pruning	REMOVE
6	Laurel oak	Quercus laurifolia	22.5		15%	\$125.00	NA	2,812.50	\$421.88	Half dead, tip decline major decay	REMOVE
7	Sabal palm	Sabal palmetto		6	70%	\$93.33	NA	559.98	\$391.99		Remain
8	Sabal palm	Sabal palmetto		8	70%	\$93.33	NA	746.64	\$522.65		Remain
9	Sabal palm	Sabal palmetto		8	70%	\$93.33	NA	746.64	\$522.65		Remain
10	Live oak	Quercus virginiana	8		60%	\$177.08	NA	1,416.64	\$849.98	Cluster 7 trunks 22 DBH with all trunks	Remain
11	Christmas palm	Adonidia merrillii		13	70%	\$229.17	NA	2,979.21	\$2,085.45		Remain
12	Christmas palm	Adonidia merrillii		13	70%	\$229.17	NA	2,979.21	\$2,085.45		Remain
13	Live oak	Quercus virginiana	10.5		50%	\$177.08	NA	1,859.34	\$929.67	Major sucker growth on trunk, co-dom, poor structure	Remain
14	Live oak	Quercus virginiana	11.5		60%	\$177.08	NA	2,036.42	\$1,221.85	Cluster 9 trunks	Remain
15	Live oak	Quercus virginiana	6.5		40%	\$177.08	NA	1,151.02	\$460.41	Sub-canopy, poor structure	Remain
16	Calophyllum	Calophyllum inophyllum	21		15%	\$210.42	NA	4,418.82	\$662.82	Co-canopy, on water's edge, heaved, laying in canal	Remain
17	Sabal palm	Sabal palmetto		12	70%	\$93.33	NA	1,119.96	\$783.97		Remain
18	Sabal palm	Sabal palmetto		15	70%	\$93.33	NA	1,399.95	\$979.97		Remain
19	Sabal palm	Sabal palmetto		10	70%	\$93.33	NA	933.30	\$653.31		Remain
									\$17,526.49		



TREE DISPOSITION PLAN

SCALE: 1" = 50'-0"



TONNING & ASSOCIATES, INC.
Landscape Architecture & Land Planning

Landscape Architect - Florida License #6666709
4855 NW 92 Terrace
Coral Springs, Florida 33067
Tel: 561-414-8269 Email: wtonning@tonningandassociates.com

TREE DISPOSITION PLAN
FLORIDA INDOOR TENNIS
WEST ATLANTIC BOULEVARD
POMPAHO BEACH, FLORIDA 33069
RWB LINARES ARCHITECTURE

DRWG. TITLE :

PROJECT :

CLIENT :

Wayne K TONNING

Digitally signed by Wayne K TONNING
Date: 2023.12.08 11:44:51 -05'00'

PROJECT NO. 22-144

DRAWN BY WKT

DESIGNED BY WKT

CHECKED BY WKT

DATE : 01-17-23

DWG. NO. LE-1

SHT. NO. 1 of 1

REVISIONS :

DRC
PZ23-12000009
01/17/2024